

**iS203 - SEA SHELL**

Semi-detached Villa in Iskele / Iskele, from £230,000



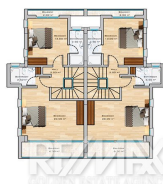
iS203, Semi-detached Villa, Iskele, Iskele, 120m<sup>2</sup>, 2 bedroom(s), 1 bathroom(s)

from £230,000



**Description**

**Floor Plans**



iS203 VILLA  
FIRST FLOOR PLAN  
AREA: 120.00 m<sup>2</sup>



## Features

### Interior Features:

Fitted Wardrobes in all Bedrooms  
Dining Room

Master Bedroom with ensuite

Fully Fitted Kitchen

### Exterior Features:

Balcony  
Insulated Walls  
Private Parking

Terrace  
Extensive Terraces

Fully double-glazed  
Landscaping

### Site Features:

Restaurant On-Site  
Communal GYM

Gated Community  
Swimming Pool (Communal)

Wellness Centre and SPA

### Technical Features:

Water Tank  
Water pressure tank

Central heating infrastructure  
Heater

Air conditioning infrastructure

### Locational Features:

Beachfront (0 to Sea)  
Walking distance from the sea

Sea Views  
Close to local amenities

Access to beach